



BUILDING COMPREHENSIVE PREVENTION ON CAMPUSES

CALCASA Statewide Conference, August 9 & 10, 2017

PreventConnect
1215 K Street
Suite 1850
Sacramento CA
95814

Website: preventconnect.org

Email: info@preventconnect.org

Email Group:

preventconnect.org/email-group

eLearning: learn.preventconnect.org

Wiki: wiki.preventconnect.org



preventconnect.org/Facebook



preventconnect.org/Twitter



preventconnect.org/Flickr



preventconnect.org/YouTube



preventconnect.org/LinkedIn



preventconnect.org/Pinterest



Presenters



Ashleigh Klein-Jimenez, MPA
Project Manager
CALCASA/PreventConnect



Elizabeth Wilmerding, MSW
Prevention Program Manager
PATH to Care Center
UC Berkeley



Sarah Gamble, PhD
Assistant Director of
Prevention
PATH to Care Center
UC Berkeley



What we will discuss today

- Frameworks for building comprehensive prevention on campus
- Campus prevention resources
- Examples of what this looks like in action



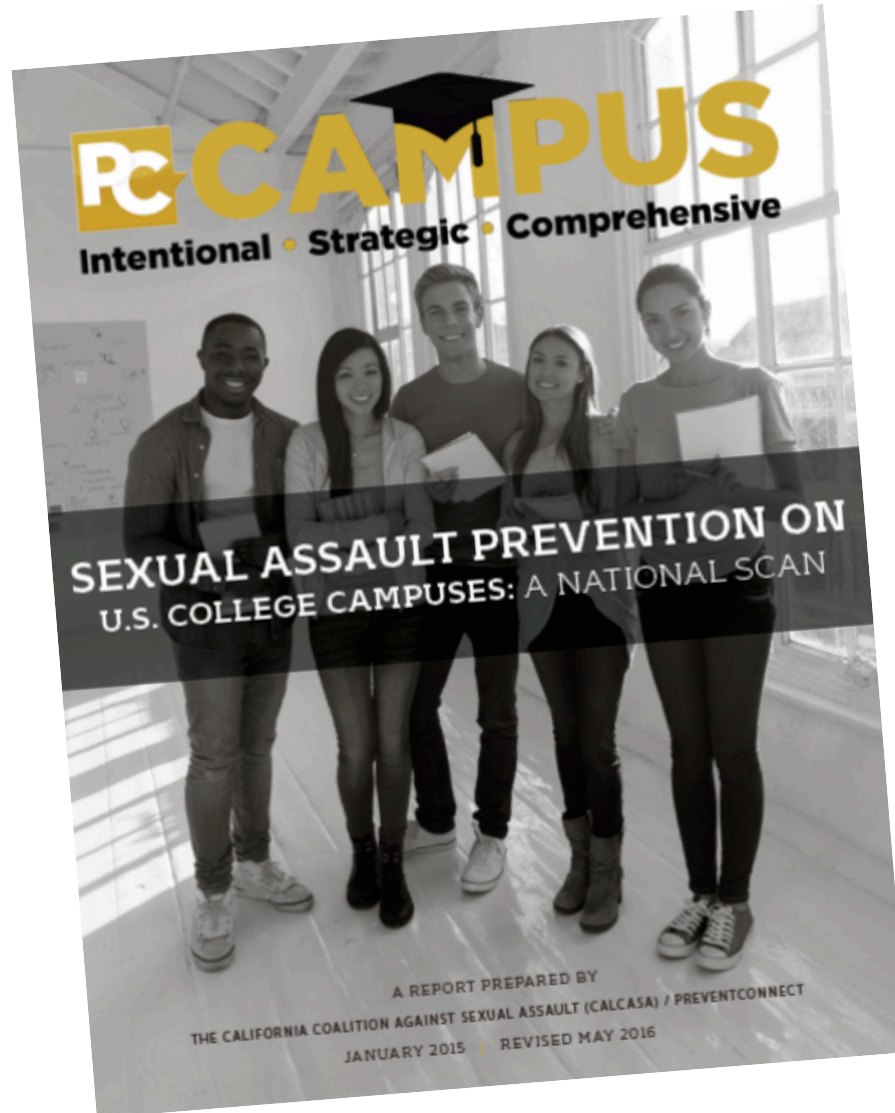


CAMPUS

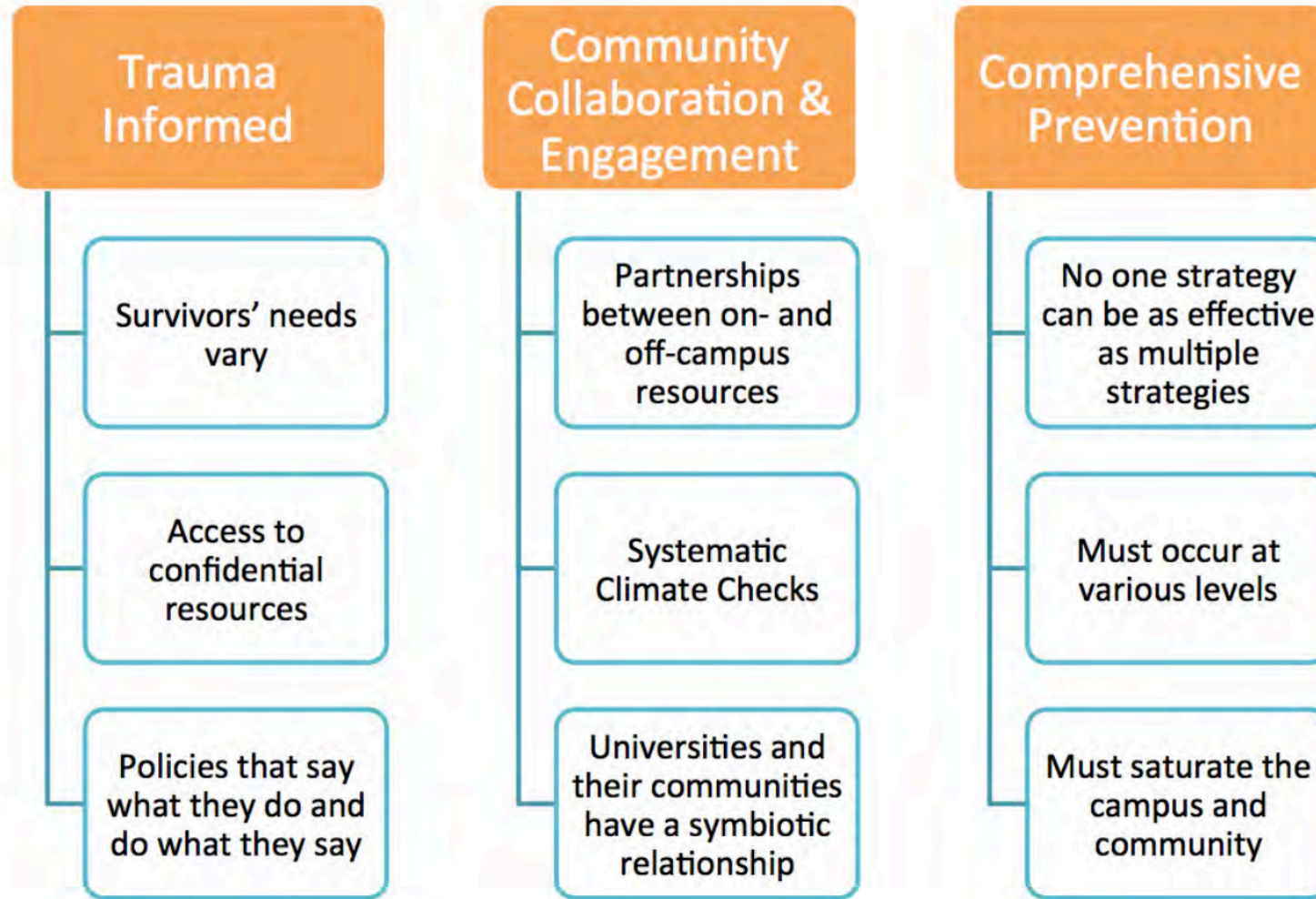
Intentional • Strategic • Comprehensive



National Prevention Scan



3-Pronged Approach to Effectively Addressing and Preventing Sexual, Domestic, Dating and Stalking Violence on College Campuses



Intentional

- Plan prevention as much as we plan Title IX and the adjudication process



Strategic

- Prevention must be tailored to individual campus
- Prevention must be linked to other messages and activities

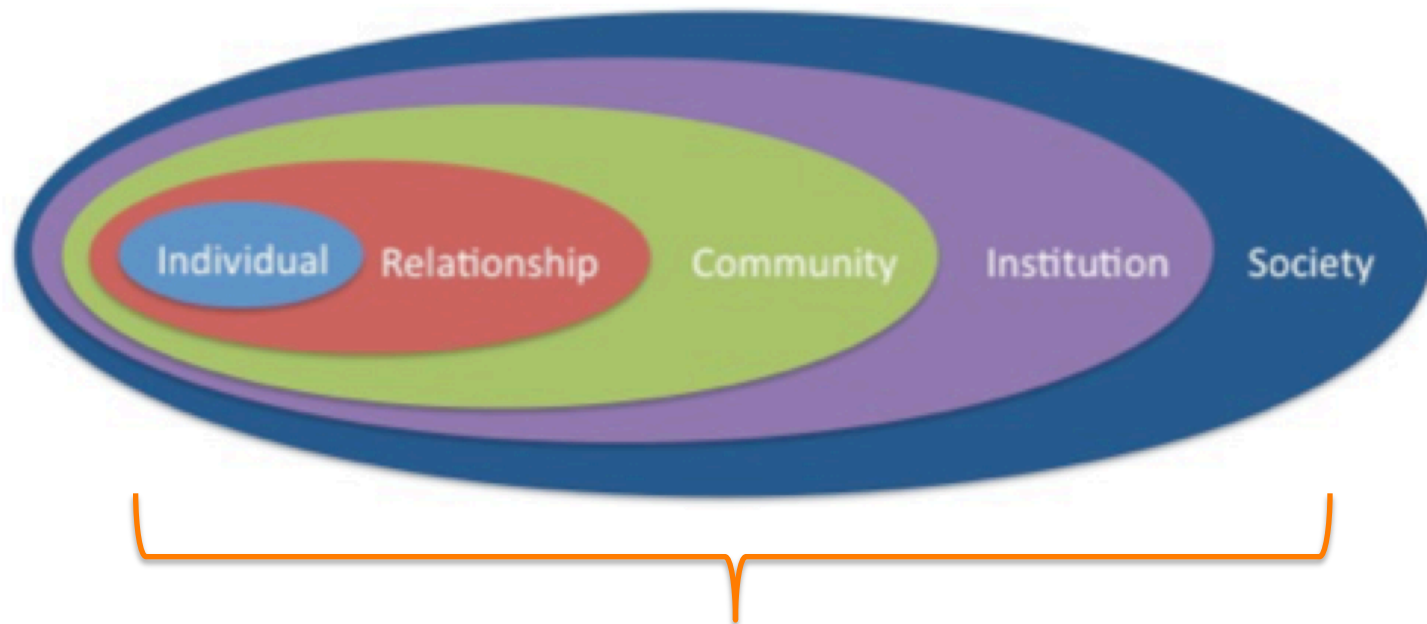


Comprehensive

- No one strategy is as effective as multiple strategies
- Must occur at various levels
- Must saturate campus and community



Comprehensive Social Ecological Model



ALL LEVELS OF PREVENTION



Need a Prevention Plan



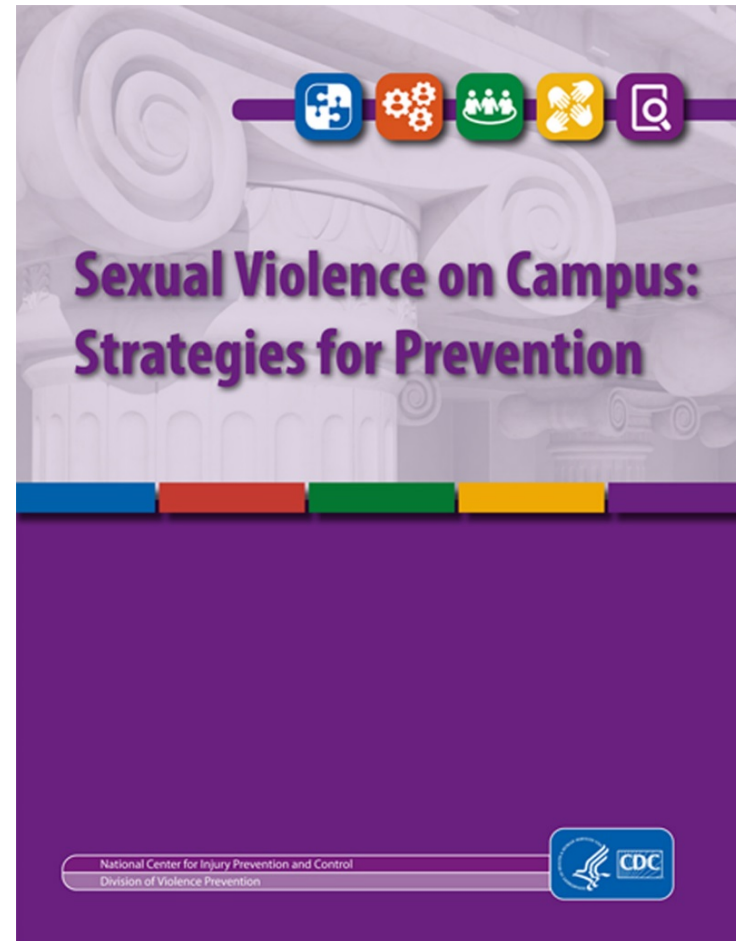
Planned, Strategic and Intentional

- Mix of Topics (elements)
- Mix of Dissemination Modalities
- Mix of Partnerships



Sexual Violence on Campus: Strategies for Prevention

- Starting place
- Planning for prevention
- Implementing prevention strategies



<http://go.usa.gov/xkJ4f>



Prevention Framework



**Comprehensive
Prevention**



Infrastructure



Audience



**Partnerships &
Sustainability**



Evaluation



Comprehensive Prevention

- Implement prevention efforts across the social ecological model
- Incorporate principles of prevention
- Use data to make decisions
- Employ a multi-sector approach
- Coordinate efforts across prevention and response
- Partner with community organizations and rape crisis centers



Infrastructure

- Use well trained staff
- Hire dedicated prevention staff
- Institutionalize prevention
- Create a team/workgroup/committee
- Foster relationships with referral services
- Incorporate violence prevention with other prevention programs
- Use a trauma-informed approach
- Work across all types of violence



Audience

- Identify champions
- Remember that the messenger matters
- Tailor prevention efforts to specific communities
- Plan for differences in types of institutions
- Engage parents as an audience
- Use social media
- Encourage active and visible bystanders



Partnerships and Sustainability

- Develop MOUs with community partners
- Ensure leadership buy-in
- Create permanent staff positions
- Engage students in planning and programming
- Partner with health services

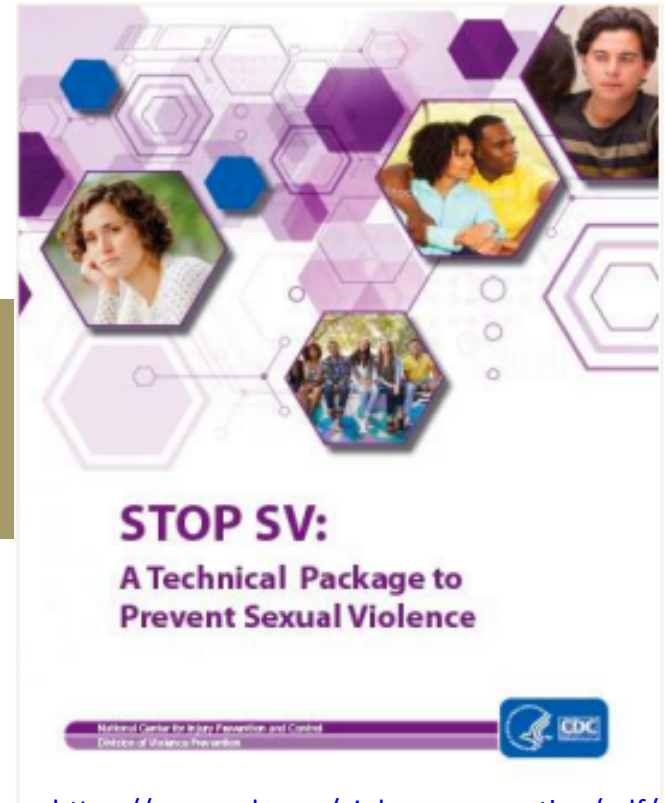


Evaluation

- Rigorously evaluate promising prevention programs, practices and policies
- Focus outcomes on reductions in perpetration
- Create capacity for evaluation




What works to prevent sexual violence?



<https://www.cdc.gov/violenceprevention/pdf/sv-prevention-technical-package.pdf>



STOP SV: A Technical Package to Prevent Sexual Violence

 STOP SV		
	Strategy	Approach
S	Promote Social Norms that Protect Against Violence	<ul style="list-style-type: none">• Bystander approaches• Mobilizing men and boys as allies
T	Teach Skills to Prevent Sexual Violence	<ul style="list-style-type: none">• Social-emotional learning• Teaching healthy, safe dating and intimate relationship skills to adolescents• Promoting healthy sexuality• Empowerment-based training
O	Provide Opportunities to Empower and Support Girls and Women	<ul style="list-style-type: none">• Strengthening economic supports for women and families• Strengthening leadership and opportunities for girls
P	Create Protective Environments	<ul style="list-style-type: none">• Improving safety and monitoring in schools• Establishing and consistently applying workplace policies• Addressing community-level risks through environmental approaches
SV	Support Victims/Survivors to Lessen Harms	<ul style="list-style-type: none">• Victim-centered services• Treatment for victims of SV• Treatment for at-risk children and families to prevent problem behavior including sex offending



Promote Social Norms that Protect Against Violence

- Bystander approaches
- Mobilizing men and boys as allies



Teach Skills to Prevent Sexual Violence

- Social-emotional learning approaches
- Teaching healthy, safe dating and intimate relationships
- Promoting healthy sexuality
- Empowerment-based training



Provide Opportunities to Empower and Support Girls and Women

- Strengthening economic supports for women and families
- Strengthening leadership and opportunities for adolescent girls



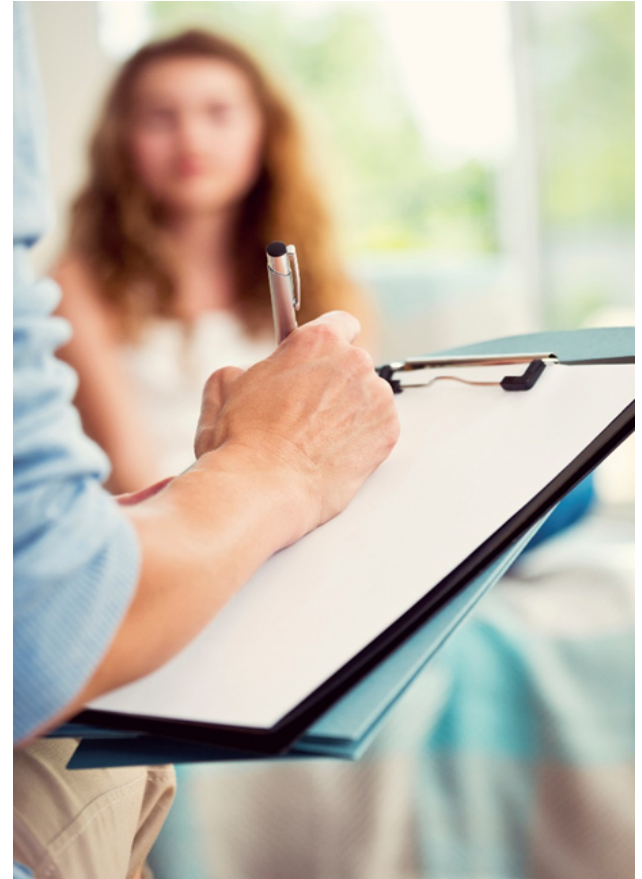
Create *Protective* Environments

- Improving safety and monitoring in schools
- Establishing and consistently applying workplace policies
- Addressing community-level risks through environmental approaches



Support Victims/Survivors to Lessen Harms

- Victim-centered services
- Treatment for victims of sexual violence
- Treatment for at-risk children and families to prevent problem behavior, including sexual offending



PreventConnect
1215 K Street
Suite 1850
Sacramento CA
95814

Website: preventconnect.org

Email: info@preventconnect.org

Email Group:

preventconnect.org/email-group

eLearning: learn.preventconnect.org

Wiki: wiki.preventconnect.org



preventconnect.org/Facebook



preventconnect.org/Twitter



preventconnect.org/Flickr



preventconnect.org/YouTube



preventconnect.org/LinkedIn



preventconnect.org/Pinterest

