

THIS WEB CONFERENCE WILL BEGIN SOON

WEB CONFERENCE SERIES | SEEING SURVIVORS IN FAMILIAR SPACES

HOW TO HELP

Referrals and Resources for
Survivors of Sexual Violence

Tuesday, September 22
10-11am (pt)





CALCASA.org

FOLLOW US

twitter.com/CALCASA

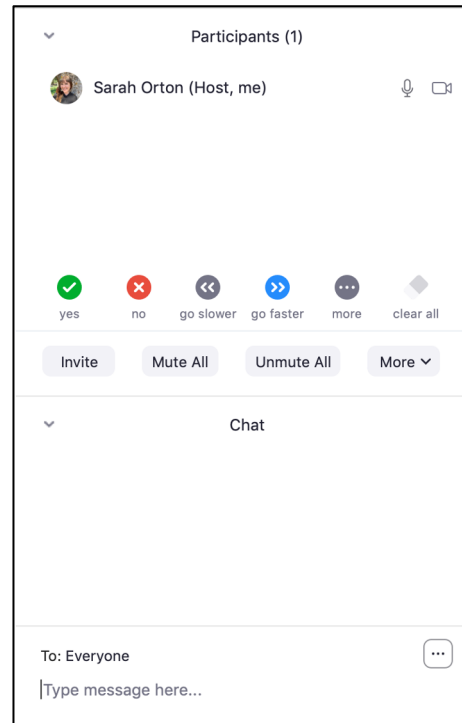
facebook.com/CALCASA

instagram.com/cal_casa

This web conference is supported by funding awarded by Victims of Crime Act Victim Assistance Formula Grant Program and Services*Training*Officers*Prosecutors (STOP) Violence Against Women Formula Grant Program funds (TE19-22-1578) through the California Governor's Office of Emergency Services (Cal OES). The opinions, findings, and conclusions in this publication are those of the author and not necessarily those of Cal OES. Cal OES reserves a royalty-free, nonexclusive, and irrevocable license to reproduce, publish, and use these materials and to authorize others to do so.

HOW TO USE ZOOM

- Text chat
- PowerPoint Slides
- Polling Questions
- Phone
- Closed Captioning
- Web Conference Guidelines (hand raising)



Mute



Stop Video



Security



Participants



Chat



Share Screen



Polling



Record



Closed Caption



Reactions



More

End

Upcoming Web Conferences:

09/24 Essential and Vulnerable: Essential Workers and Sexual Violence

09/29 Dating App-Facilitated Assault: Dating Apps and Sexual Abuse

MEET THE CALCASA TEAM



Meghna Bhat
Project Coordinator
she/her/hers



Shelby Phillips
Project and Communications
Coordinator
she/her/hers

PRESENTER:



Emily Austin, JD
Legal Consultant
CALCASA
she/her/hers

Learning Objectives

- Define trauma-informed and survivor-centered care.
- Learn about local, state and national resources for survivors.
- Understand the goals and impacts of different systems of response to sexual violence.
- Learn how to connect survivors with local sexual assault support and care.

Trauma-Informed Care Warning

This content may impact you and could trigger feelings of concern, emotions, and/or a physical response.

Please take care of yourself:

- Step away if you need
- Turn down sound
- Reach out for support



Audience Poll:

Do you know your local sexual assault agency?

Audience Poll:

Do you know a state or national resource for sexual violence survivors?

Trauma-Informed Care

Care and practices that recognize and respond to the impact of trauma on individuals, families, communities and society at large.

Care and practices that actively resist re-traumatization.



We cannot be trauma-informed without first understanding trauma

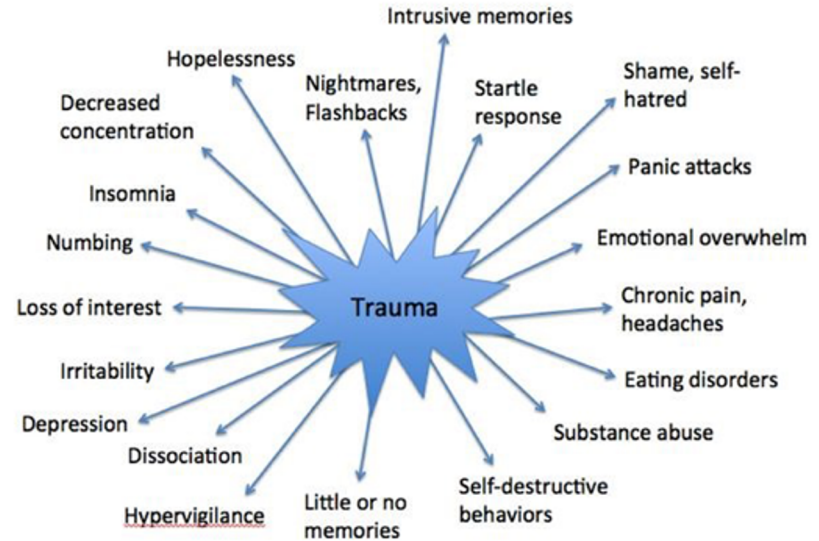


What is Trauma?



What is Trauma?

Trauma is the response to a deeply distressing or disturbing event that overwhelms an individual's ability to cope, causes feelings of helplessness, diminishes their sense of self and their ability to feel the full range of emotions and experiences.



Adapted from Janina Fisher

4 R's of a Trauma-informed Care and Approach:

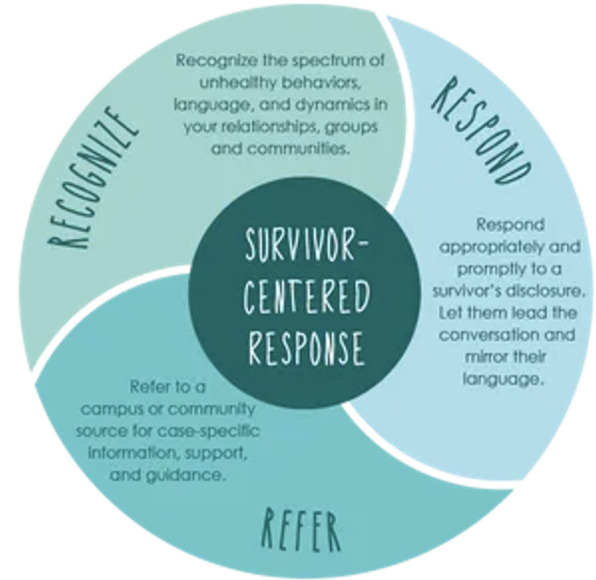
- Realizes the widespread impact of trauma and understands potential paths for recovery
- Recognizes the signs and symptoms of trauma in clients, families, staff, and others involved with the system
- Responds by fully integrating knowledge about trauma into policies, procedures, and practices
- Resists re-traumatization

Survivor-Centered Approach

Prioritizes the needs, rights and wishes of the survivor of violence

The survivor has a right to:

- be treated with dignity and respect instead of being exposed to victim-blaming attitudes
 - choose the course of action in dealing with the violence instead of feeling powerless
 - privacy and confidentiality instead of exposure
 - non-discrimination instead of discrimination based on gender, age, race/ ethnicity, ability, sexual orientation, HIV status or any other characteristic
 - receive comprehensive information to help her make her own decision instead of being told what to do
- **Example of rights from UN Women*



Local Resources

Resources in you community, city, and/or county

- Each county has at least one designated rape crisis center and domestic violence agency/shelter
- Each county has the government agencies
 - City and District Attorneys Office
 - Department of Public Health
 - Child Protective Services



State Resources

State resources bridge across communities and cities. These resources often are advocating for state-level changes (i.e., state laws, budget changes and state allocated resources)

California Coalition Against Sexual Assault (CALCASA)

www.calcasa.org

California Partnership to End Domestic Violence

www.cpedv.org

Governor's Office of Emergency Services

California Department of Public Health



National Resources and beyond

Works on national response and public policy advocacy.

RAINN (National Sexual Assault Hotline)
CALL 800.656.HOPE (4673)

Raliance: Ending Sexual Violence in One Generation
www.raliance.org

National Sexual Violence Resource Center
www.nsvrc.org

National Center on Domestic and Sexual Violence
www.ncdsv.org

Amnesty International
<https://www.amnesty.org/en/>

ACLU
www.aclu.org



Roles and Impacts of Different System Responses



- Rape crisis center advocates
- Criminal justice/Law enforcement
 - Police officers, District Attorneys, detectives/investigators
 - Victim-Witness Supports
- Administrative systems (Title IX in schools, Union/HR processes)
- Healthcare (Hospitals, Doctors, Nurses, Mental health services)
- Civil cases and remedies

Serving specific communities

- Black Women's Blueprint
<https://www.blackwomensblueprint.org/>
- Asian Pacific Institute on Gender-based Violence
<https://www.api-gbv.org/>
- Break the Cycle (teen dating and sexual abuse)
<https://www.breakthecycle.org/>
- National Latin@ Network
<https://www.nationallatinonetwork.org/>
- GLBTQ Domestic Violence Project
<http://www.glbtqdv.org/>
- National Queer and Trans Therapists of Color Network
<https://www.nqttcn.com/>



Serving specific communities – Indigenous Tribes

National Indigenous Women's Resource Center

- <https://www.niwrc.org/>

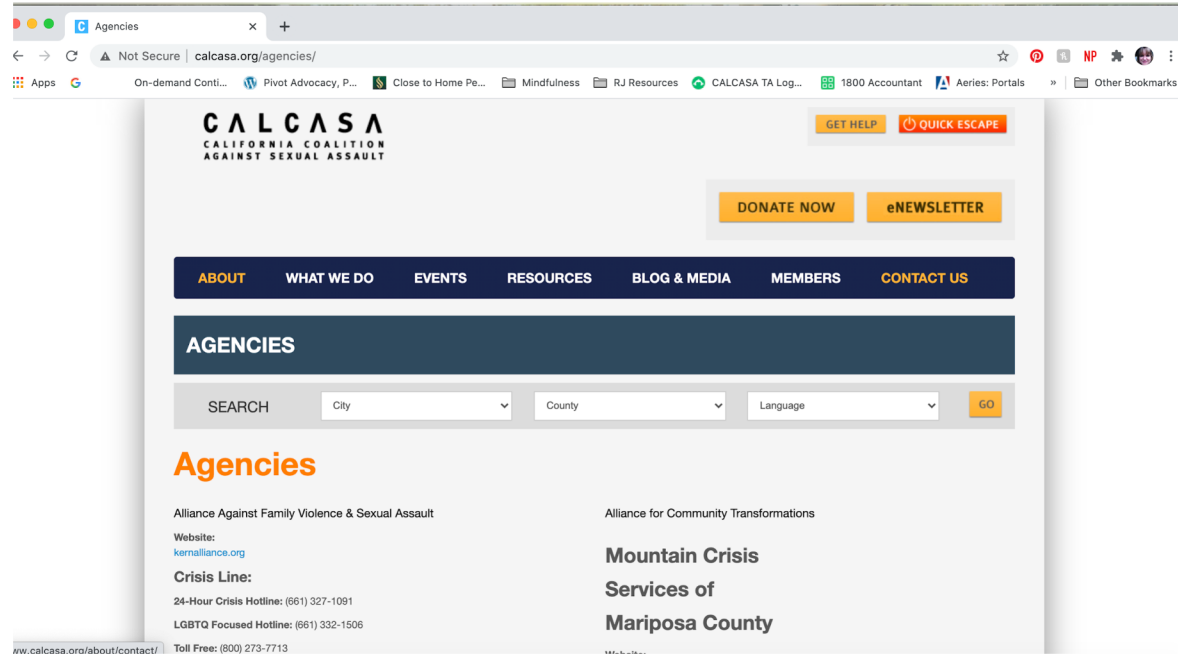
Coalition to Stop Violence Against Native Women

- <https://www.csvanw.org/>

Strong Hearted Native Women's Coalition (CA)

- <http://strongheartednativewomen.org/>

California Rape Crisis Centers—Local Resource



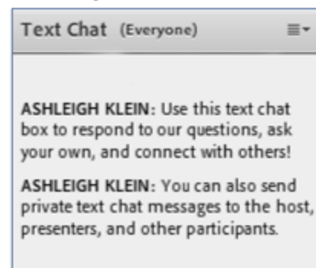
Why Local?

- Connected to communities and community needs
- Culturally competent and inclusive
- Assessable
- Local relationships, partnerships, and collaborations



Questions?

Use the Text Chat feature or use the hand raising function to ask questions.





That's all Folks!