

**VALORUS** 

Advancing Equity. Ending Sexual Violence.®

**CLOSE TO HOME (C2H)**

# Moving to Act

---

**Session 4**

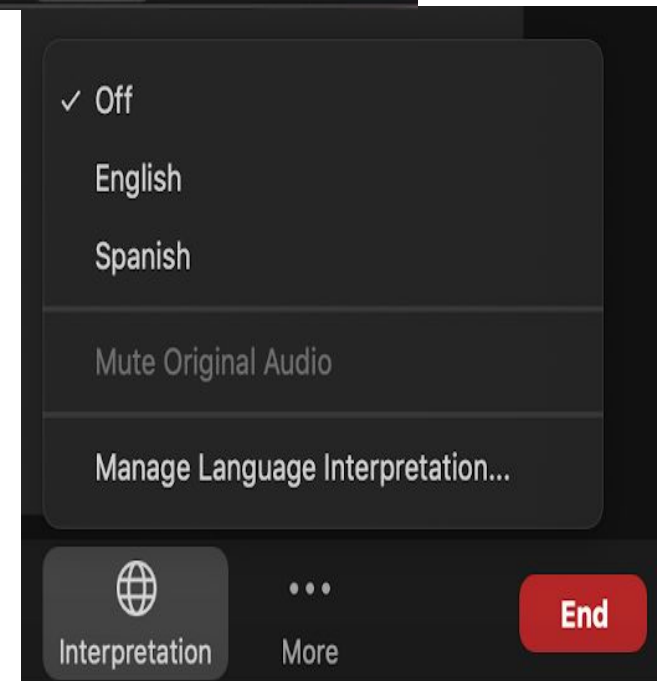
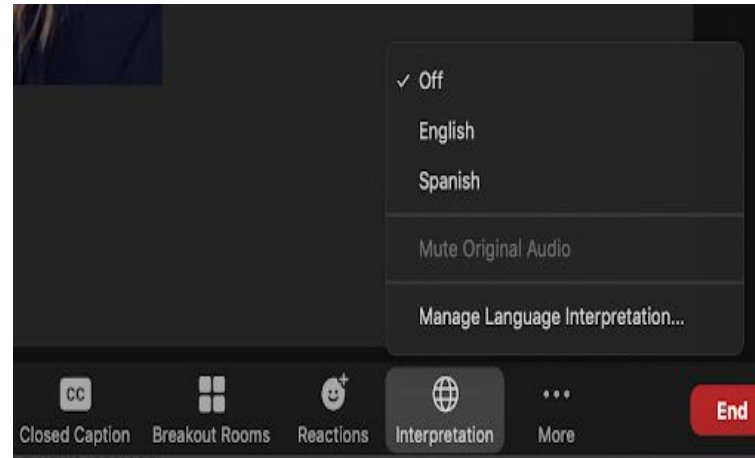
**September 21, 2023**

**1:00–3:00 pm PT**



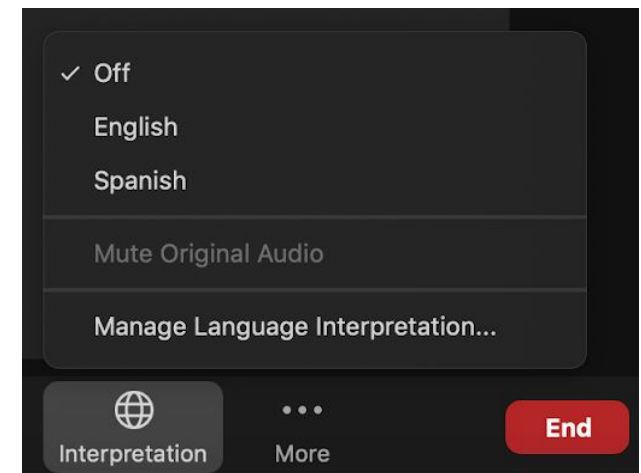
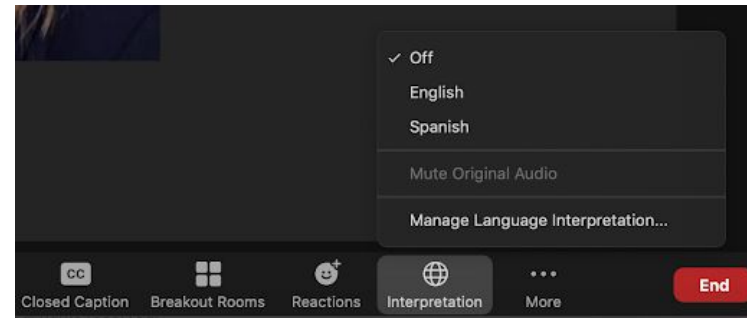
# CÓMO UNIRSE AL AUDIO

- ▶ Esta conferencia web se ofrece en inglés con interpretación en vivo en español.
- ▶ La interpretación en español sólo está disponible cuando se utiliza el audio por Internet, "*join audio by computer*".
- ▶ Los que marquen por teléfono sólo escucharán el inglés.
- ▶ Si necesita escuchar la interpretación en español, por favor únase sólo con el audio por computadora.



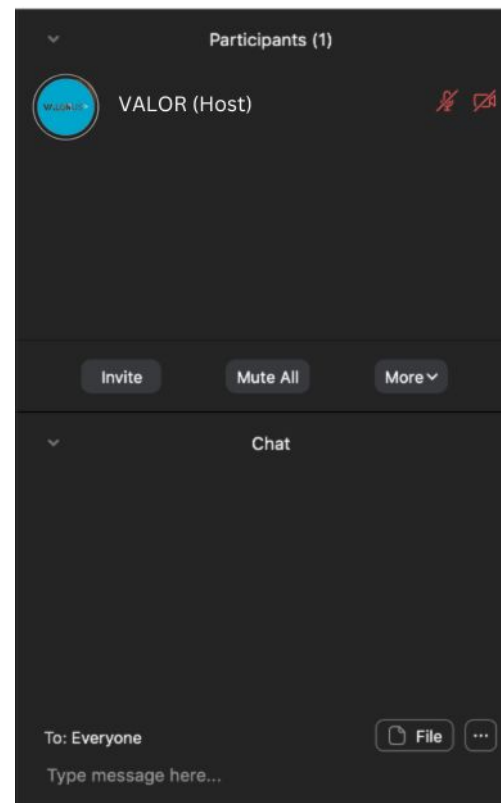
# HOW TO JOIN AUDIO

- ▶ This web conference is offered in English with live Spanish interpretation.
- ▶ Click on the Interpretation Globe icon at the bottom of your Zoom screen to select a Language
- ▶ Spanish interpretation is only available when using Internet audio, “join audio by computer.”
- ▶ Those dialing in over the phone will only hear English.
- ▶ If you need to hear the Spanish interpretation, please join with computer audio only.



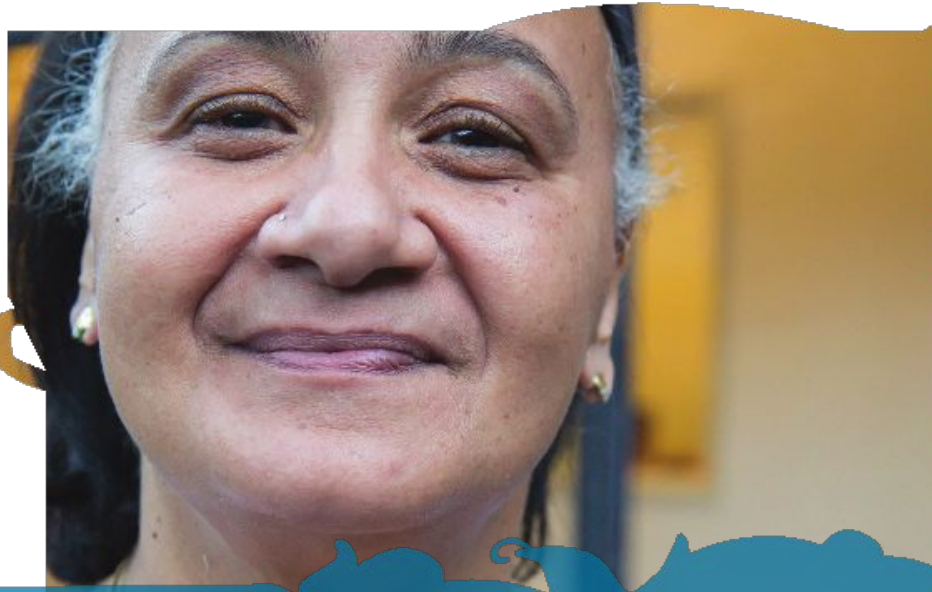
# HOW TO USE ZOOM

- Text chat
- Phone
- Live captioning
- Recording & slides



# Funding Disclaimer

*This training is supported by the California Department of Public Health, Injury and Violence Prevention Branch, Rape Prevention and Education (RPE) Program, through funding from the Centers for Disease Control and Prevention (CDC), National Center for Injury Prevention and Control (Cooperative Agreement 5 NUF2CE002501). The opinions and findings of this training are those of the facilitators and not necessarily those of CDPH.*



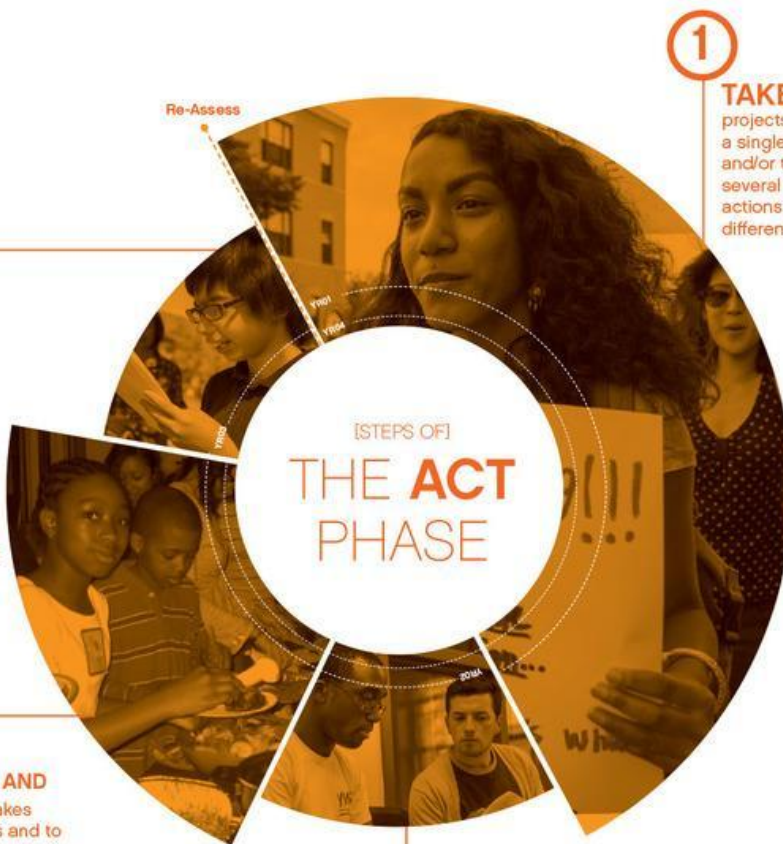
# Close to Home Moving to Act part 2 September 21, 1 pm - 3 pm



These materials were developed for ValorUS® and were funded by the California Department of Public Health through Grant # 21-10113. The views and information expressed do not necessarily represent the official views of California Department of Public Health or VALOR.



# Act Phase



1

**TAKE ACTION.** At last, network teams implement their projects. Depending on the project, this process could be a single event that supports ongoing community building and/or the launch of a specific campaign that lasts for several months. Ideally, at this time, a variety of campaigns/ actions are unfolding across the community, engaging different aspects of the community simultaneously.

4

## IDENTIFY NEW OPPORTUNITIES

Through the learnings and insights gathered from community organizing, and as the network looks towards another cycle of the process, opportunities for further action are identified. Over time, it is important to assess where the community is at in its level of comfort, engagement, and ownership of the issues of domestic and sexual violence, so that the network can design the next approach to the cycle based on what will carry the community deeper into its participation in social change.

3

## CELEBRATE THE NETWORK AND ITS ACHIEVEMENTS

The network takes time to celebrate their accomplishments and to feel connected to the greater vision. Because social change is a long process, it is critical to celebrate small successes along the way, through food, connection, and recognition of network members' contributions.

2

## DEBRIEF WHAT WAS DISCOVERED AND LEARNED

Network teams debrief what worked and what could be improved about specific actions. Lessons learned are documented and shared across the network to increase innovation and learning, cross-pollinate ideas, and inspire one another as the network cycles through and deepens work in each phase.

# Let's Talk About Your Data

Each site have a few minutes to talk about the data and learnings they have collected



What themes do you see in the data and community learnings that have been shared?

# Is this Action/Mobilization?

- *Where is the energy in your network? What is your community focused on right now?*
  - How will your Act Phase make D/SV/TDV more public?
  - How will it create opportunities for people to step into new ways of being and action on an ongoing basis?
  - How will it shift social norms and deepen relationships?

# How do these themes translate to the Act Phase?



# Exploring Data to Act

Cuando preguntan a personas si existe violencia en su comunidad la mayoría contestan "no", pero cuando le dan una lista de ejemplos de violencia y preguntan si han visto esos ejemplos en su comunidad la mayoría contestan "si". Amplifica la necesidad de conversar, educar, y concienciar sobre estos temas a personas en nuestra comunidad.

// When community members are asked if violence exists in their community majority answered "no", when given examples of different forms of violence and asked if they have seen that in their community most of respondents answer "yes". Speaks to the need to the need to speak, educate, and increase awareness about these topics with people in our community.

Super important to have educational resources to help others heal from past trauma and prevent those harmful behaviors from continuing

# Discovering the Throughline - Assess/Talk to Act



# Closing Appreciations

Please share something or someone you appreciate from the last 4 years!

# Thank You!

Kassi Reisbeck  
C2H Coach  
[kassikay7@gmail.com](mailto:kassikay7@gmail.com)

Jessica Romo  
C2H Coach  
[jessromo3@gmail.com](mailto:jessromo3@gmail.com)

Aimee Thompson  
C2H Founder & Coach  
[aimee.thompson1@gmail.com](mailto:aimee.thompson1@gmail.com)

Emily Austin  
C2H Coach  
[emily@pivotadvocacy.com](mailto:emily@pivotadvocacy.com)

Shelby Vice  
VALOR  
[svice@valor.us](mailto:svice@valor.us)





# Evaluation

- Please take 5 minutes to fill out the evaluation survey in the chat.